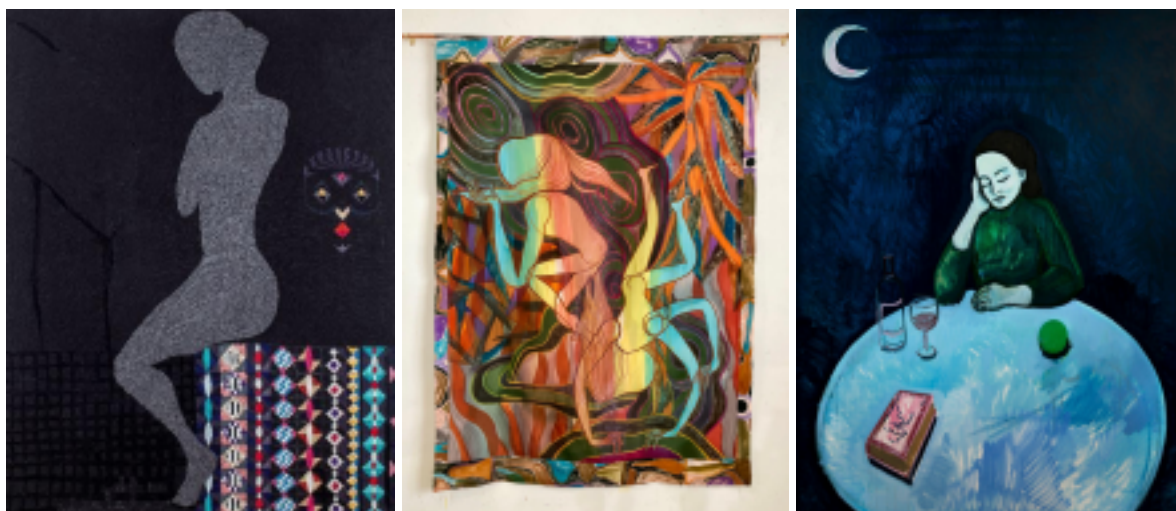


HER DARK MATERIALS



Left to right: Carolina Mazzolari, Emma Talbot, Nancy Cadogan

22 June - 22 September 2021

Curated by Philippa Adams

eyeofthehuntress.com

Eye of the Huntress is proud to announce a new digital exhibition *Her Dark Materials* curated by Philippa Adams, WWAM Arts, launching on 22 June 2021.

The exhibition will bring together 27 International women artists from all corners of the globe including artworks especially commissioned for this exhibition. Entitled *Her Dark Materials*, the exhibition will interweave a myriad of art practice, performance, sculpture, installation, tapestry, collage, music, painting and photography. The show probes some of the complex psychological, physical, historical, political and cultural themes voiced by women working at a pivotal time in our history.

Her Dark Materials is a celebration of female creativity and innovation across art and tech worlds brought to life by using the most advanced CGI technologies developed by a US based all female team of tech visionaries at INVI.

The artists featured in the exhibition are **Alexi Williams Wynn, Alice Anderson, Carolina Mazzolari, Celeste Rapone, Charlotte Colbert, Emma Talbot, Florence Hutchings, Francisca Sosa Lopez, Galina Munroe, Helen Epega (The Venus Bushfires), Jo Kitchen, Jodie Carey, Kirstine Roepstorff, Kate Daudy, Misha Milovanovich, Nancy Cadogan, Nika Neelova, Noemie Goudal, Paulina Michnowska, Pola Wickham, Rannva Kunoy, Sahara Longe, Seana Gavin, Sophie Vallance, Tiffanie Delune, Trudy Benson and Vinca Petersen.**

The virtual display will inaugurate WWAM, founded by Philippa Adams, a digital render of a former industrial warehouse which formed part of Wolverton Railway Works, commissioned by the London North Western Railway, building carriages and lines that connected London to Birmingham. The Works remains synonymous with the Royal Train, which is still maintained at Wolverton. Established in 1838, the beautiful industrial building was left to decay but is here brought to life by the leading mixed reality visionaries at INVI and architects Julian Wickham and Alex Bilton.



Left to right: Charlotte Colbert & Seana Gavin

Curator Philippa Adams: *“During a time of deep reflection, globally, this group of artists collectively and individually, bring a fresh energy and light at a pivotal time in our history.”*

Eye of the Huntress founders Alexandra Ray and Catherine Loewe: *“We are thrilled to be staging an exhibition of innovative women artists selected by Philly Adams. This collection manifests so much of what we as an all-female team of creatives are about – empowering and celebrating the fearless female spirit.”*

About Philippa Adams:

Phillipa Adams is a curator and advisor who has been instrumental in the foregrounding of emerging artists from all over the globe. Director and Head Curator of Saatchi Gallery’s collection 1999-2020, Philippa worked directly with Charles Saatchi on acquisitions and programming exhibitions which positioned emerging international artists at the forefront of contemporary art. An integral voice in the creation of landmark exhibitions, publications and acquisitions. Saatchi Gallery has directed seminal shows supporting the early exposure of 100’s of artists, propelling them into household names which changed the landscape of contemporary art for London.

In rigorous review of emerging markets and talent spanning the Americas, Russia and Asia, Philippa has directed focused exhibitions and partner projects to critical acclaim. These include *USA Today*, *NewSpeak: British Art Now*, *Shape of Things to Come*, *Unveiled: new art from the Middle East*, *Pangea Art: Art from Africa and Latin America*, *Triumph of Painting* and *Champagne Life*. Also of note are partner endeavours such as the Global Eye Programme, which exhibited 20 contemporary Korean artists in *Korean Eye 2020*. In 2019, Philippa produced and curated the seminal show *Sweet Harmony*, an immersive retrospective exploring rave culture. Celebrated as *“The biggest exhibition about rave culture in the world”*, according to Google Arts & Culture.

In a commercial partnership with Christie’s, Philippa architected a monumental artwork auction, *Thinking Big*, followed by a series of annual sales *Handpicked*, which realised several world records for female work sold, elevating many of these artists and their markets to a more global forum. She continues her commitment to focus on artists across new territories and innovative platforms. Newly appointed as Creative Director of BARCU Bogota, Colombia, an international platform with a focus on emerging Latin American artists.

WWAM Arts

WWAM Arts, has been developed as a virtual showcase for future collaborations and partnerships with new global art platforms to bring artists and creative voices to the forefront. Inspired by the former 1838 industrial warehouse. Uniquely positioned as a virtual museum which can adapt architecturally to the art that it encapsulates, creating a dialogue between the two disciplines and paving the way for further interdisciplinary experimentation. @philly2222 www.wwam.co

Architects – building survey drawings and conversion design by Julyan Wickham (WvE) and Alex Bilton (ABHR-A)

INVI

Founded in March 2020 by designers Afreen Ali and Giantien Nguyen, INVI is a Virtual Experience Design Studio that helps clients create virtual experiences through architecture, storytelling and design. INVI creates interactive and meaningful virtual environments that give the audience an unforgettable and unique experience through different types of media, form and architecture. Technology has encouraged us to experience virtual platforms beyond the physical boundaries. Therefore, INVI aims to emphasize the client's vision or content in the most effective and visually stunning way.

About Eye of the Huntress:

Combining Alexandra Ray and Catherine Loewe's impressive art market insight with their visionary expertise in interior design and collecting, The Eye of The Huntress is a trailblazing new exhibition series dedicated to showcasing works by some of the world's most exciting contemporary artists in spectacular architectural spaces recreated by using advanced CGI technologies.

Collaborating with some of the most prestigious galleries around the world and amalgamating their art world connoisseurship with the latest digital technology, Eye of The Huntress is the exhibition model of the future, transforming the way we invest and interact with art with a push of a button. The Eye of The Huntress offers a carefully curated selection of works that one can visualise at home alongside a personalised nail to nail service that delivers the artworks straight from the gallery or studio.

Ray and Loewe's new venture allows the viewers and the collectors to not only visualise the pieces at home but also immerse themselves in carefully selected historical milieus. A brainchild of two art world pundits and 'huntresses' of beauty, the new exhibition platform is here to create a magical environment removed from the cacophony of the oversaturated art market by presenting distinctive and desirable works of art as expertly curated capsule collections.

Press Enquiries:

For images and interview requests please contact **Leighanne Murray** and **Kasimiira Kontio**
leighanne@artpr.net; kasimiira@kasimiiirako.com

Press images [HERE](#)